

TORRE PUIG

Barcelona, Spain

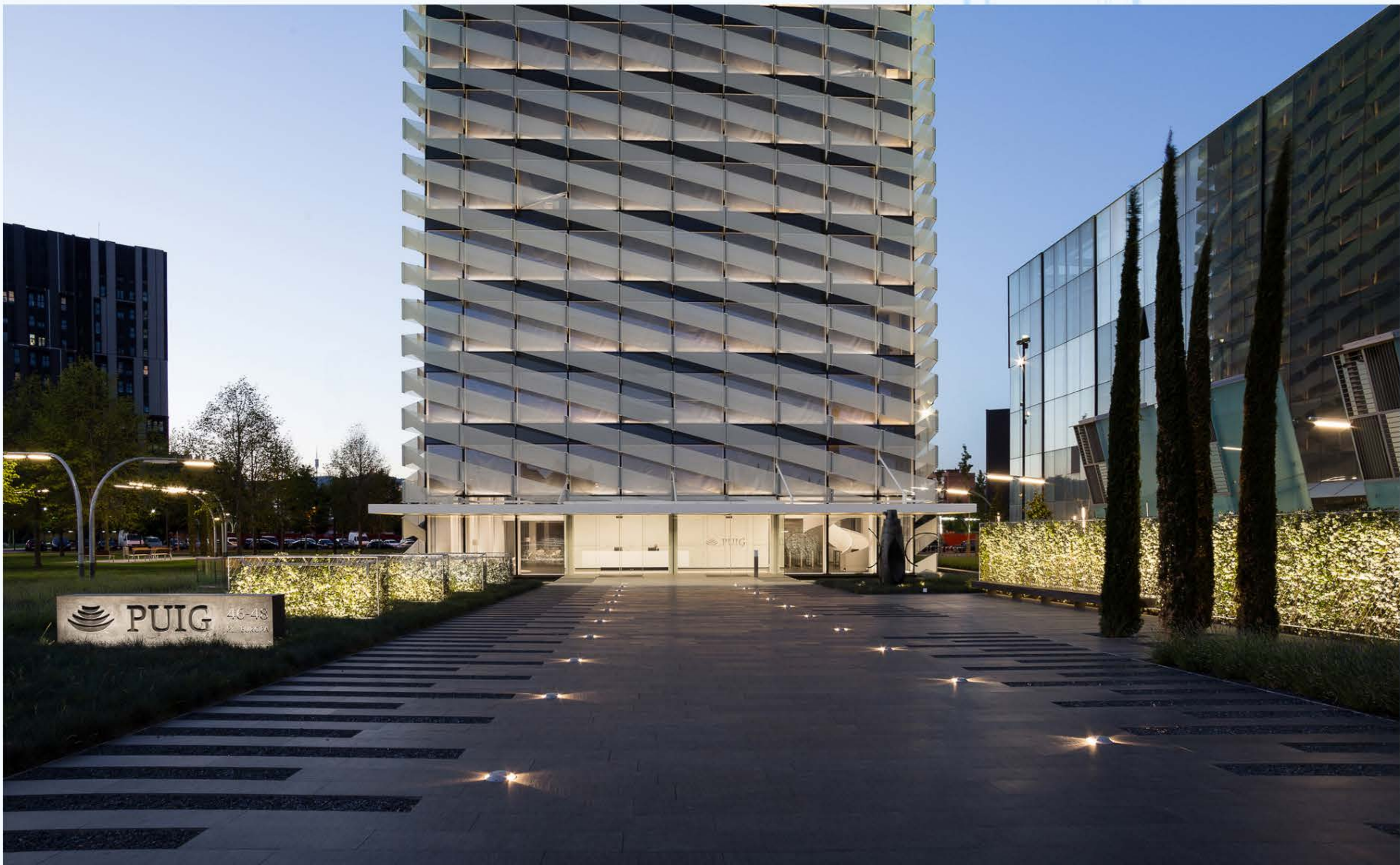
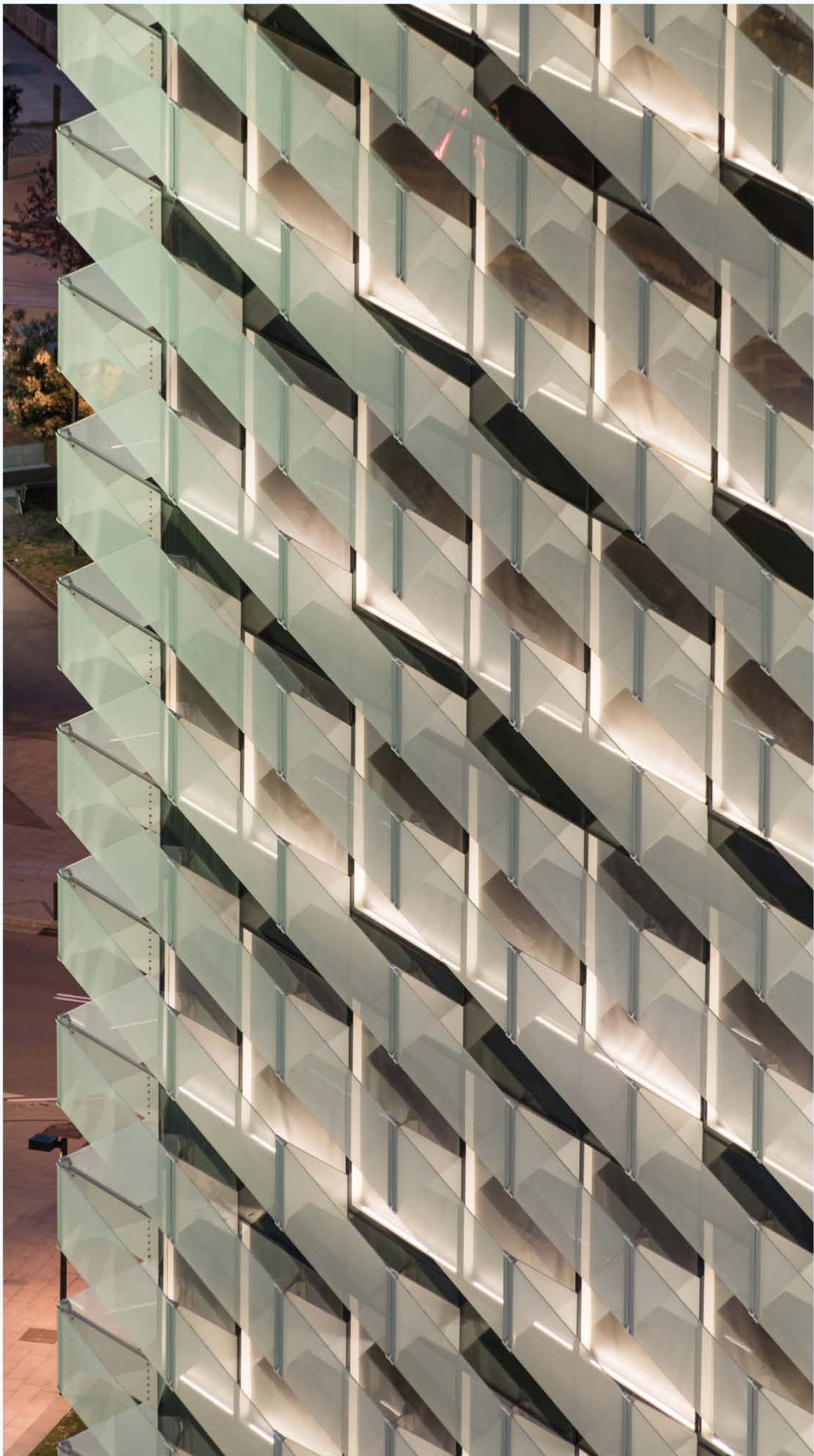
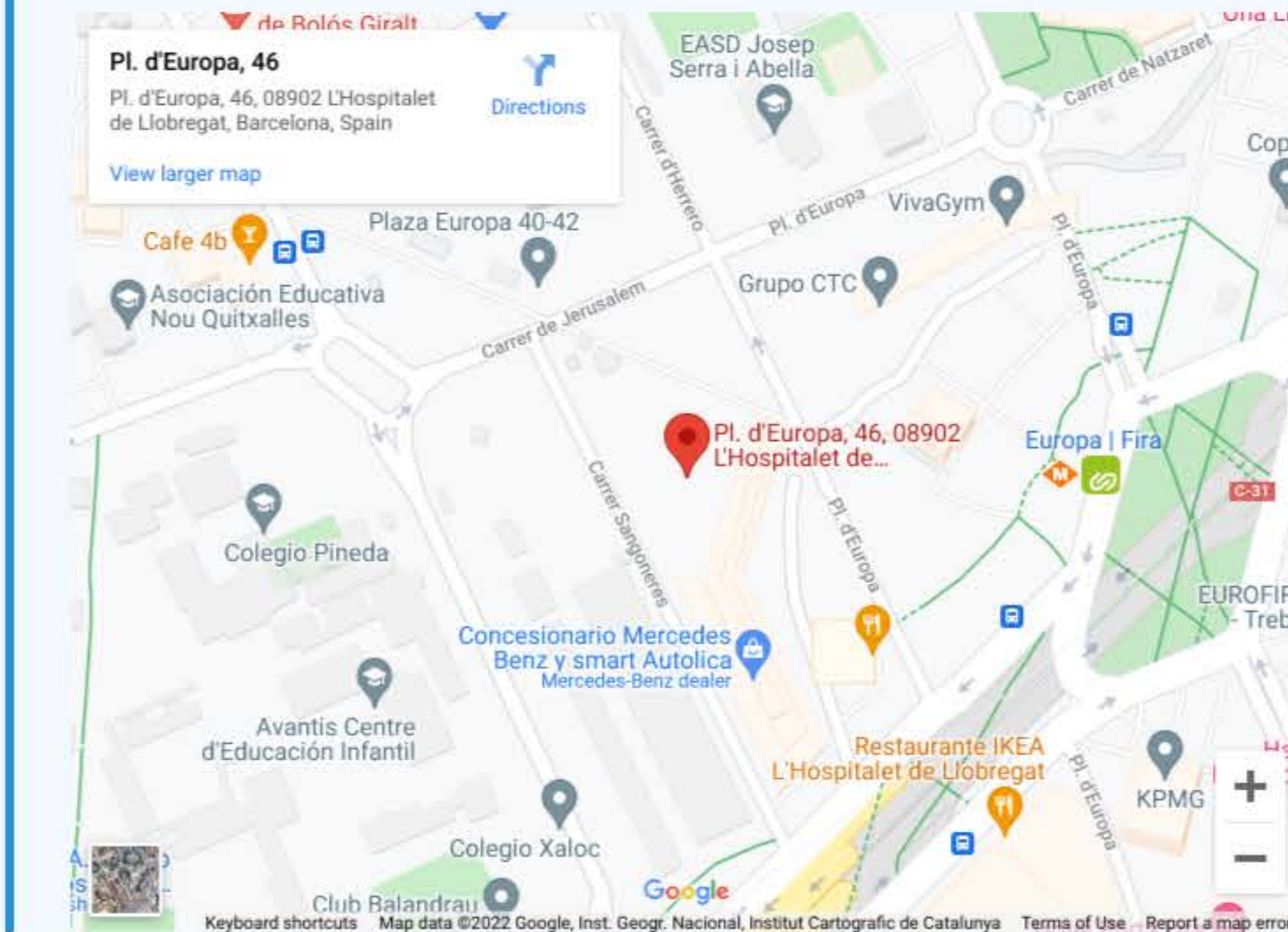


PERMASTEELISA
ESPAÑA
DONGES GROUP

The tower's interest lies in the glass spiral enveloping it, which reinforces it as a unit by eliminating any chances of the tower being interpreted as a superposition of horizontal planes. Moreover, the glass band provides the interiors with an attractive filter that improves the building's insulation.



ARCHITECT: Rafael Moneo; GCA
CLIENT: Caixa Catalunya
TPOLOGY: Passive CW S70 system
SURFACE: 13.500m²
HEIGHT: 109 m



"The tower assumes the iconographic charge of corporate headquarters that Puig gives to its products. Its architecture evokes the will to grow and the continuous desire for improvement always present in its business adventure."

GCA, Project team