

TORRE DE CRISTAL

Madrid, Spain

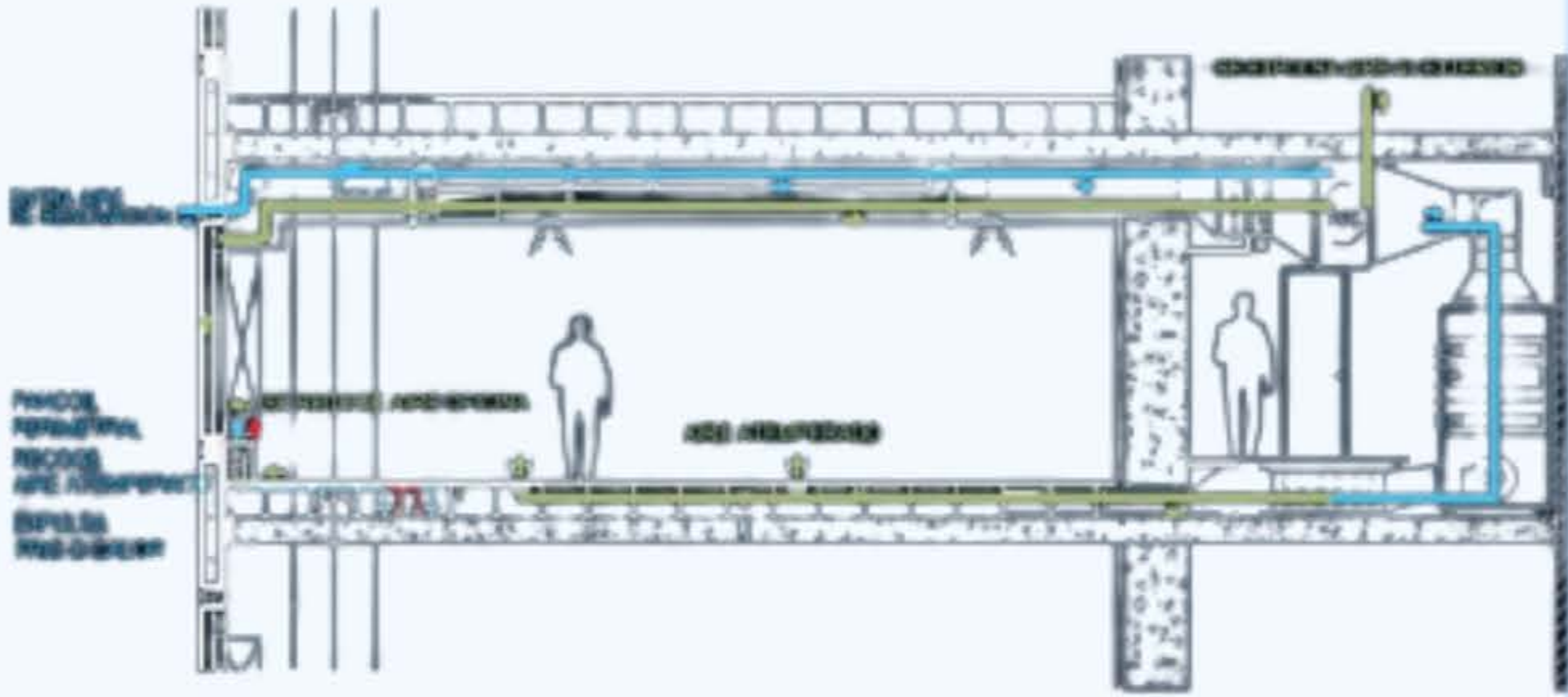


The exterior enclosure uses a system called 'bioclimatic wall' with double glazing on the exterior and an operable leaf on the interior. Between the panes of glass are louvers that mitigate any discomfort to the occupants caused by climatic variations. This system allows the use of clear glass with only a low-emissivity coating on one of the panes, which provides greater clarity of vision from the interior and a color on the exterior that allows better reflection of the different shades of the sky.

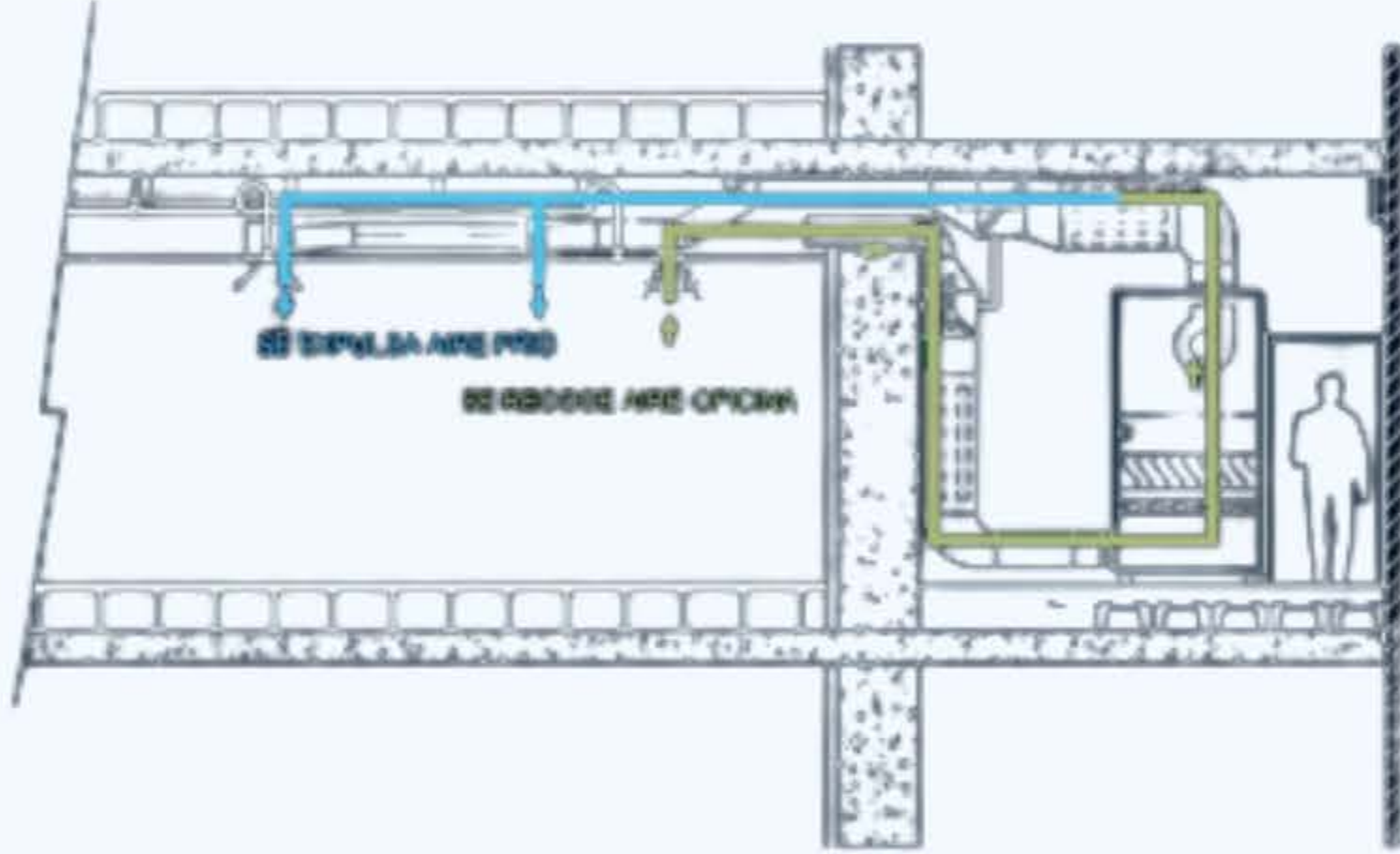


"Torre de Cristal was conceived as a crystalline, delicate and lively sculpture of ascending forms that lead our gaze to its top and to the sky."
Cesar Pelli

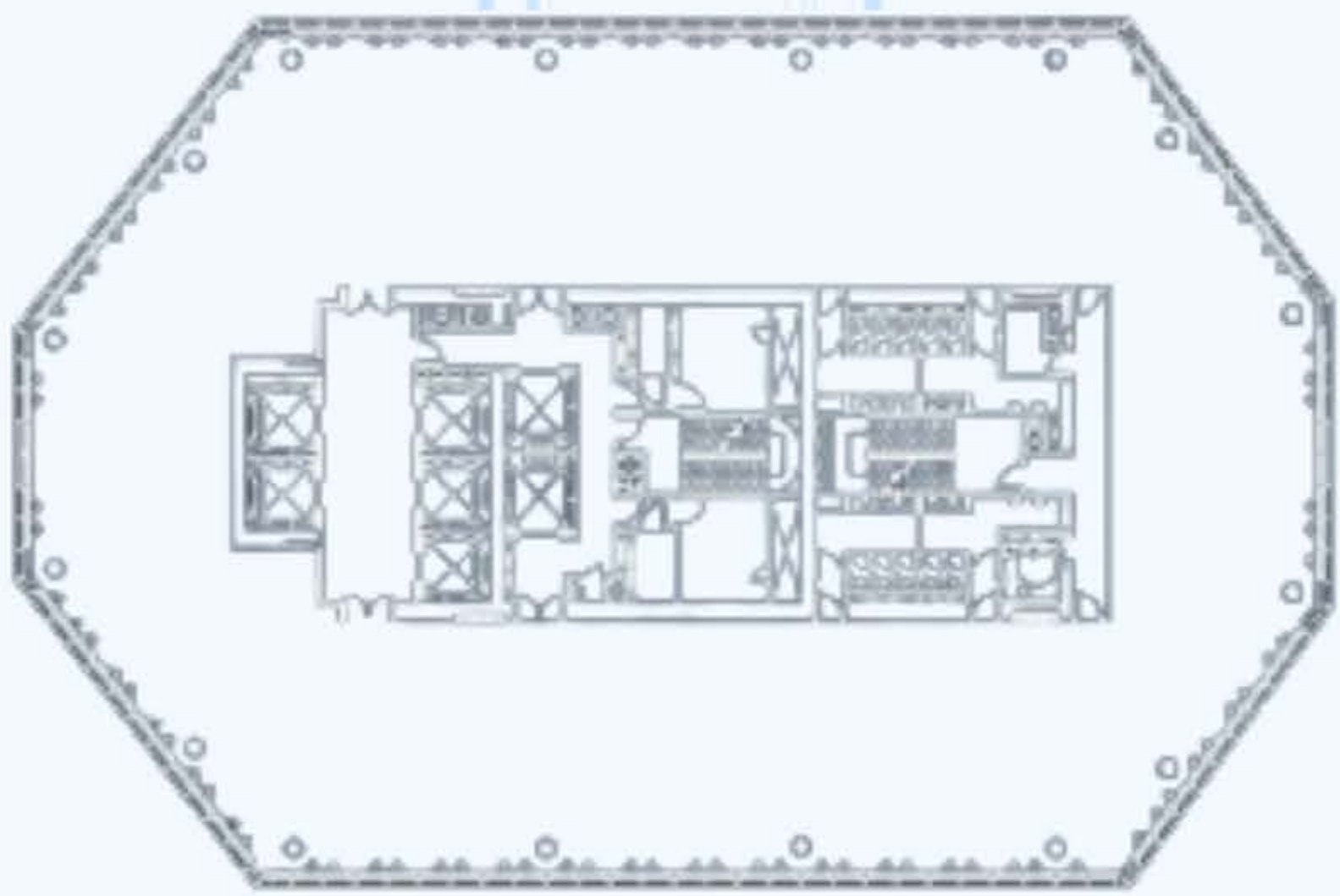
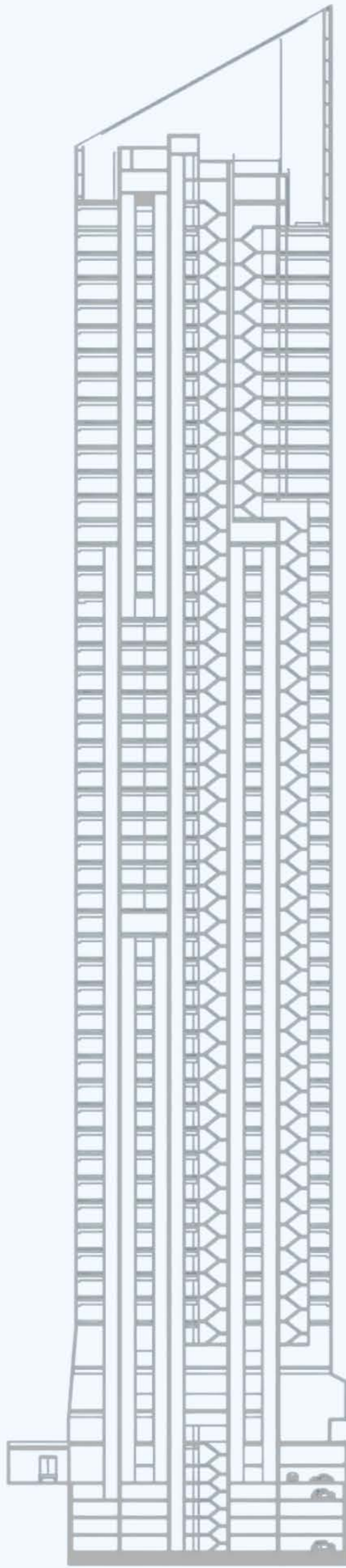
ARCHITECT: Cesar Pelli; Ortiz y León
CLIENT: Mutua Madrileña
TPOLOGY: Active CW system
SURFACE: 48.000 m²
HEIGHT: 249 m



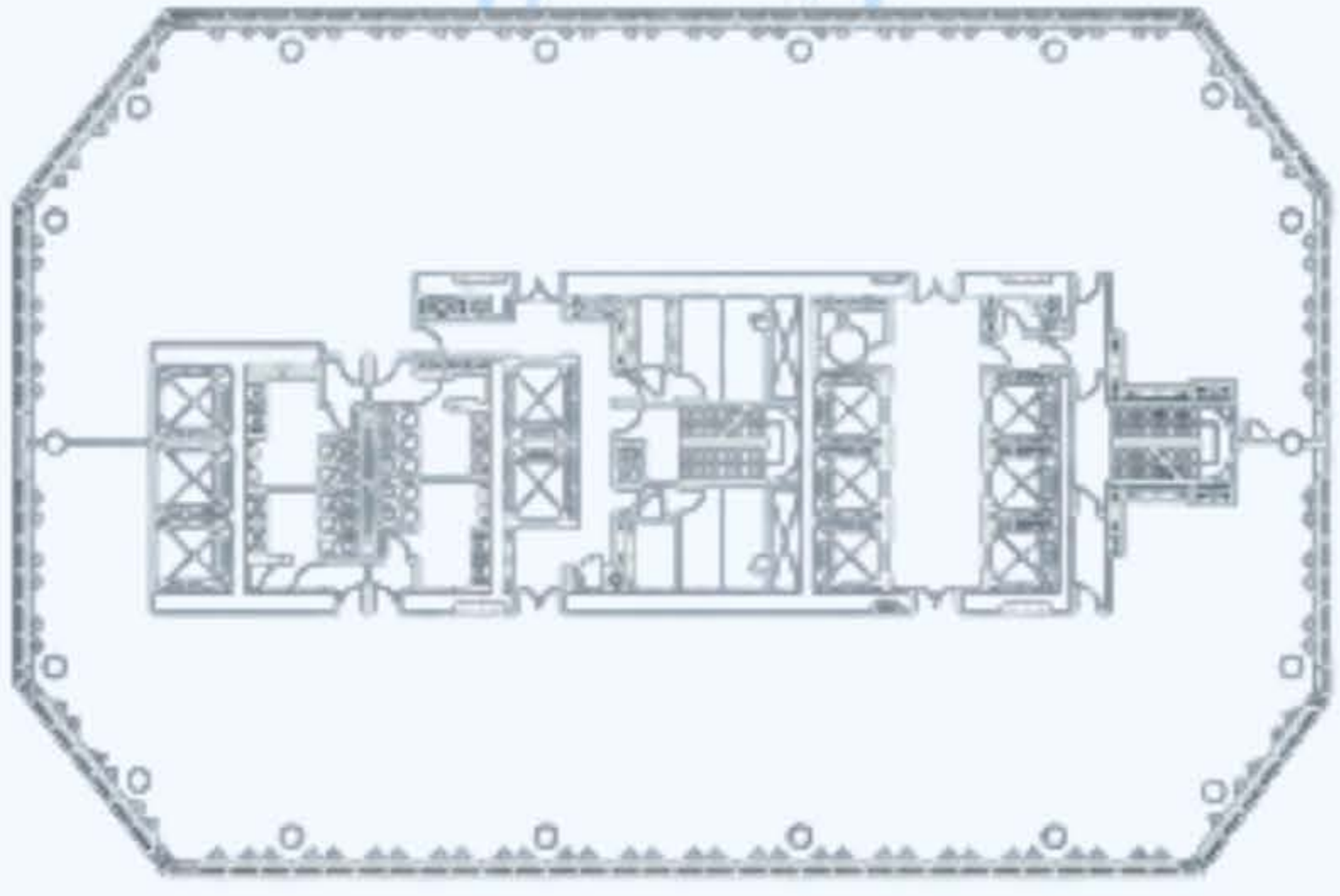
Working section. System of constant flow.



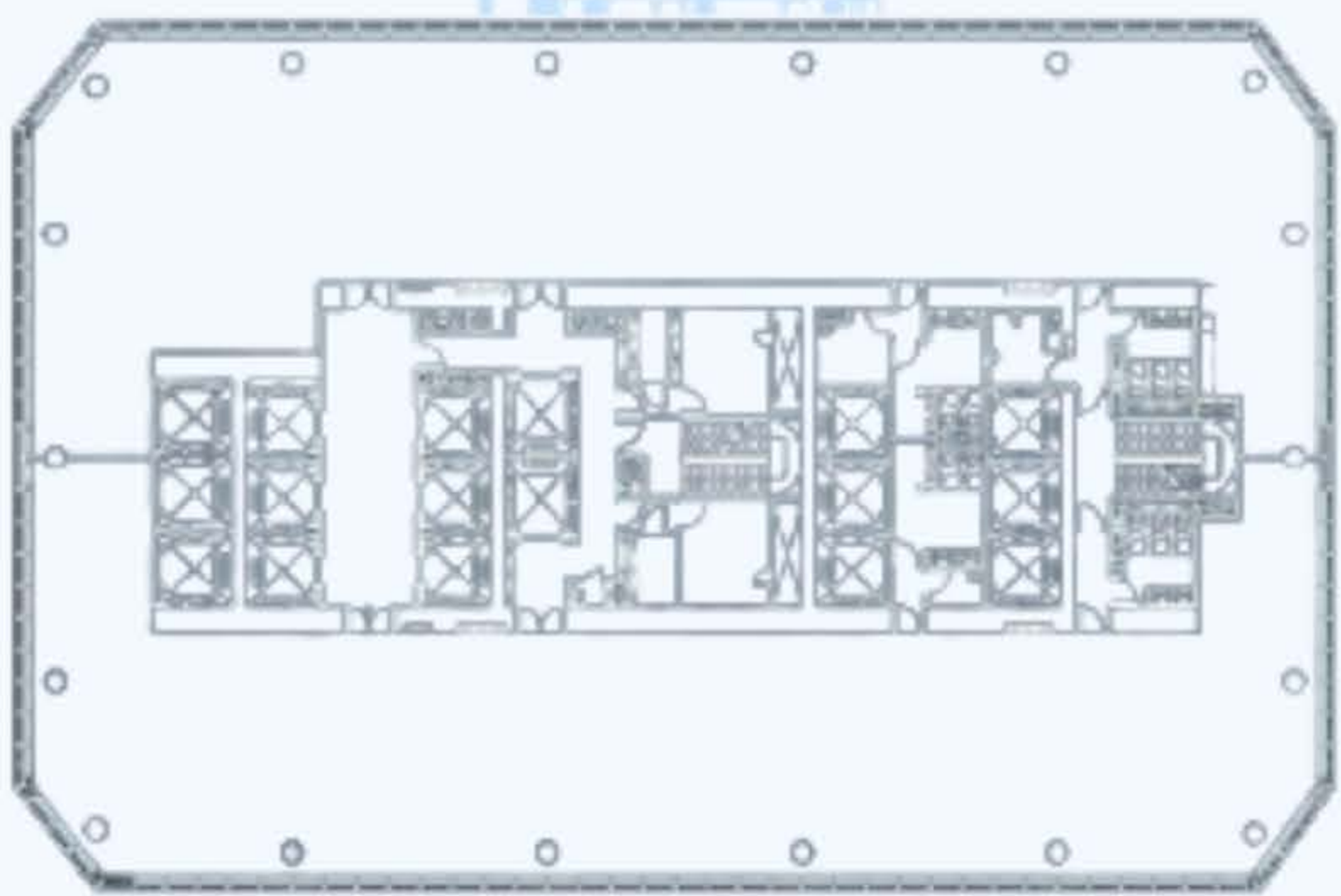
Working section. System of variable flow.



Flat model. Third third.



Flat model. Second third.



Flat model. First third.