

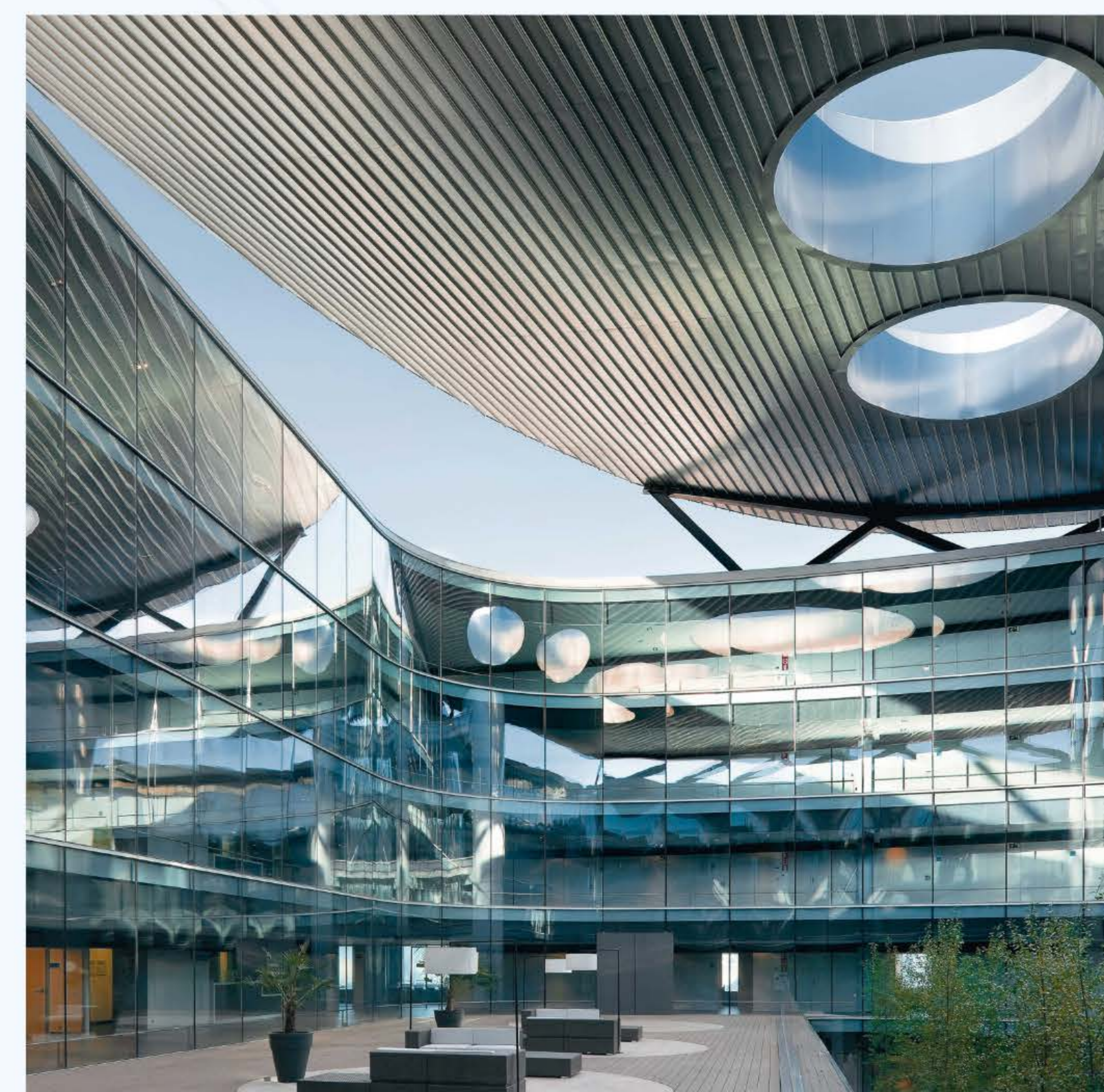
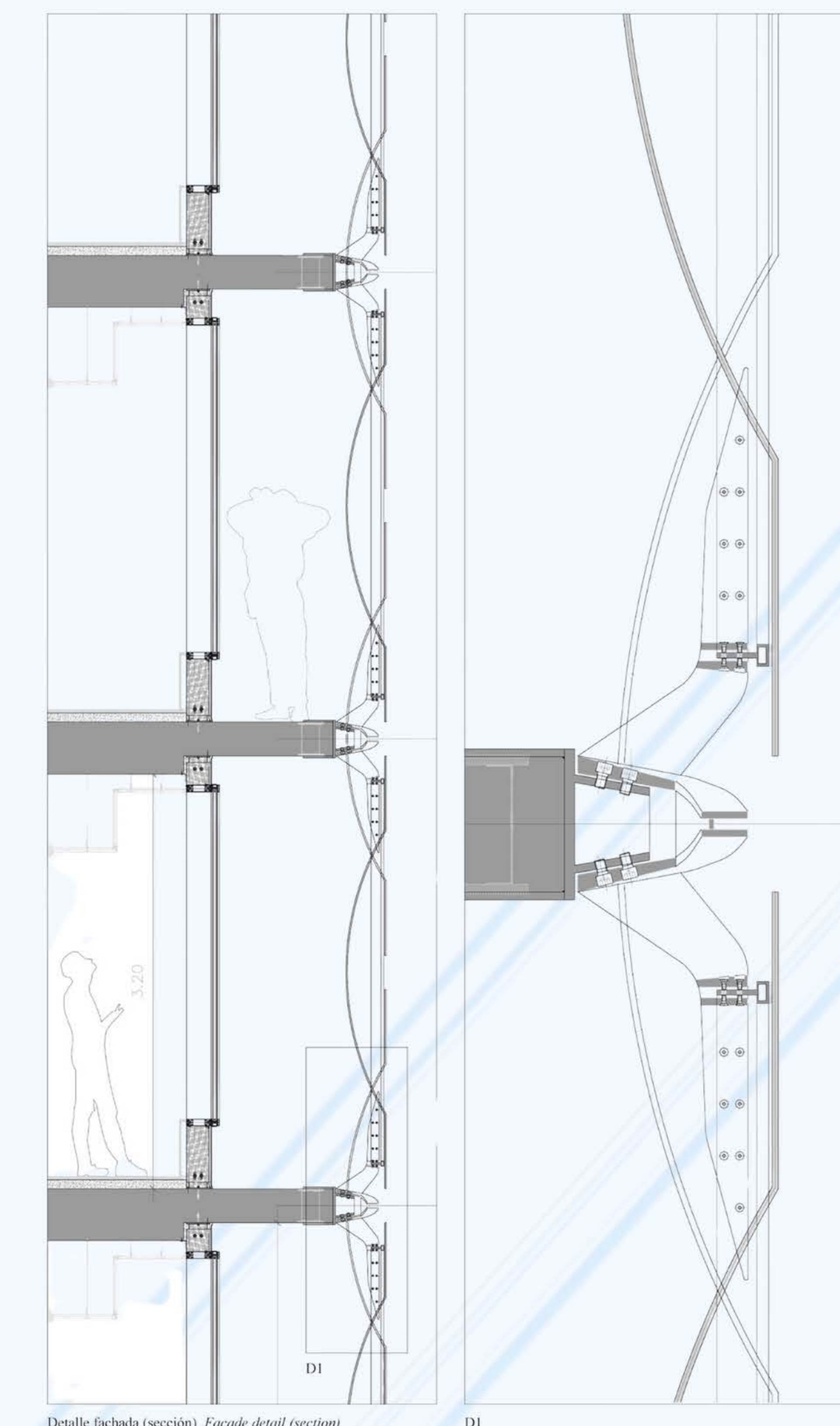
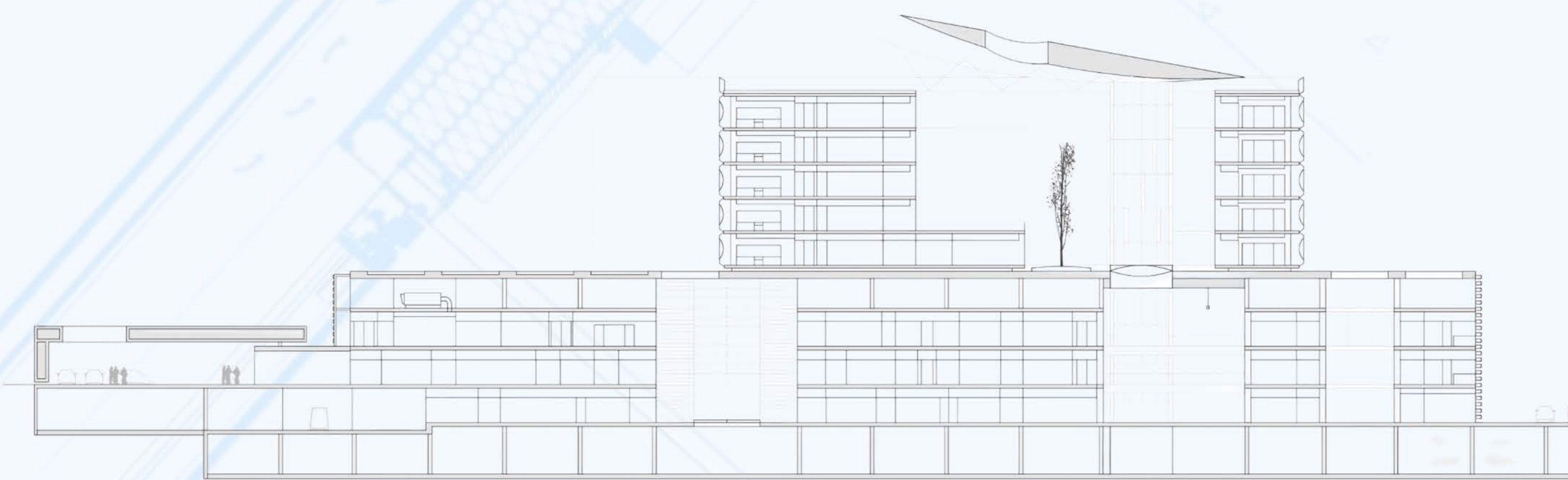
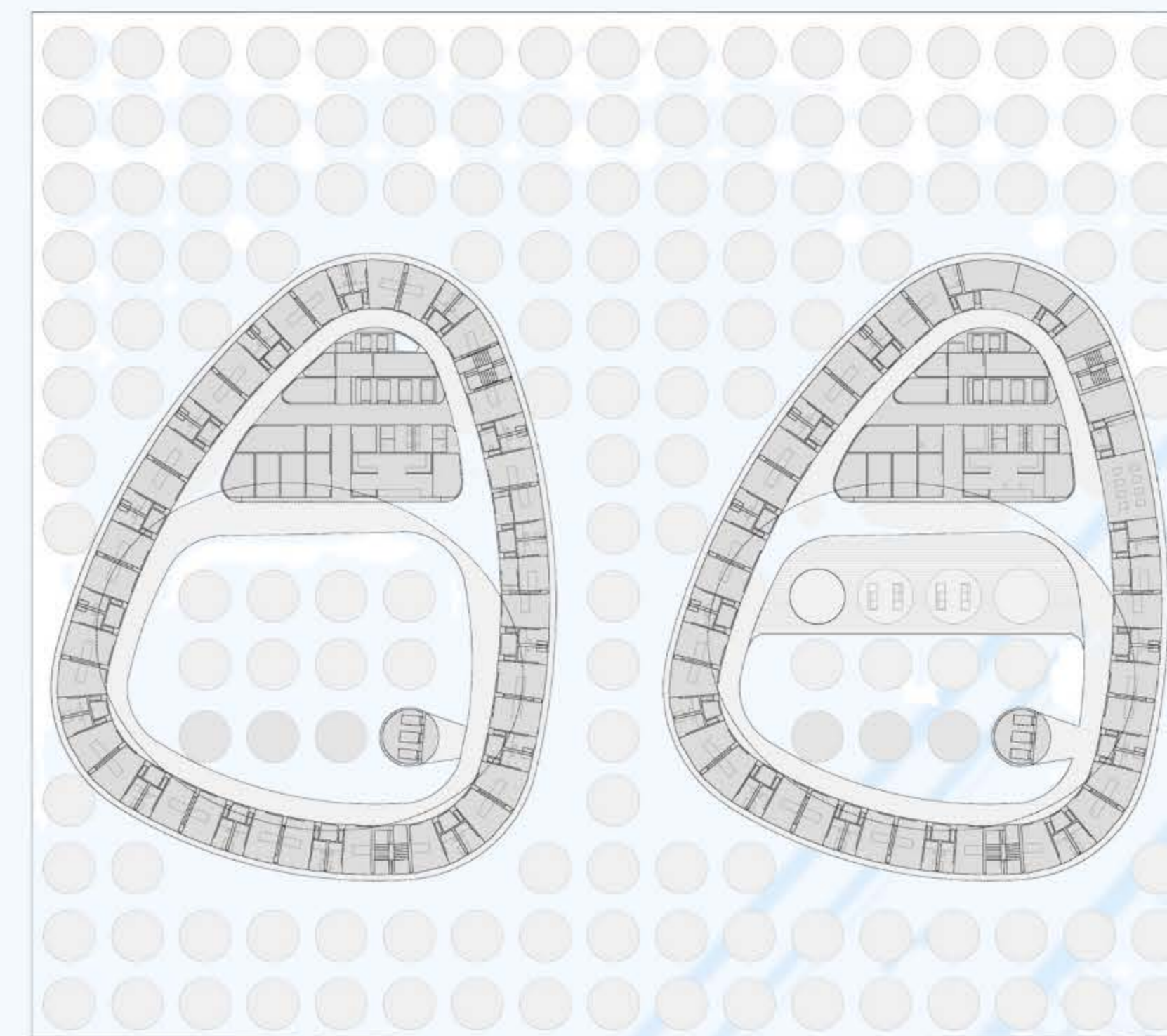
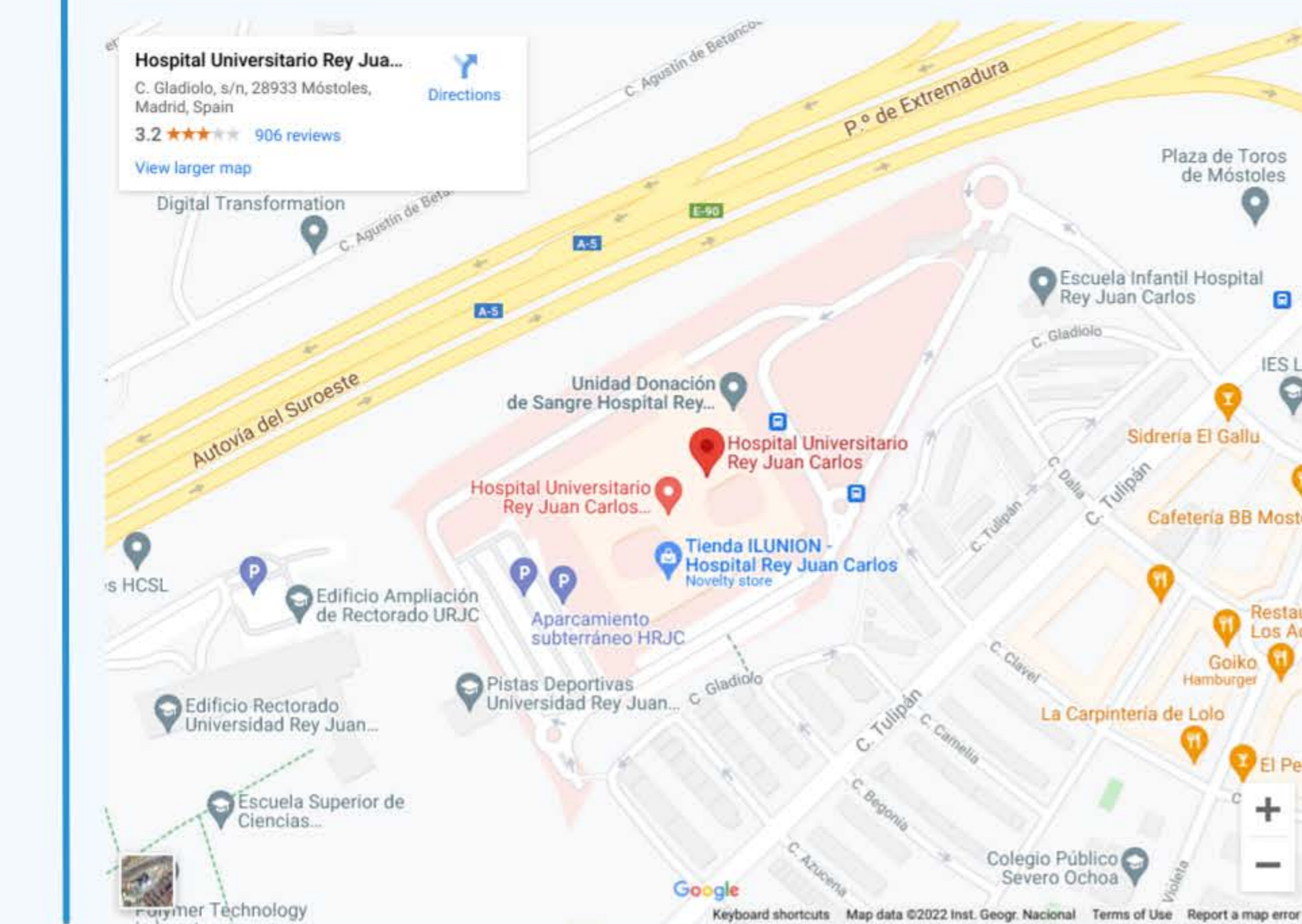
HOSPITAL REY JUAN CARLOS

Madrid, Spain



The new Rey Juan Carlos Hospital redefines conventional healthcare spaces, departing from the preestablished patterns appropriate to its typology. The outer facade of each room is closed with a large cast glass piece, which filters light through the central concave part. The white silkscreen print preserves the privacy of the rooms, whose interior cannot be seen from outside. The systematized construction, with a structural modulation, makes the building flexible in case areas need to be interchanged or in anticipation of possible extensions.

ARCHITECT: Rafael de la Hoz
CLIENT: Capiro
TYPOLGY: Passive CW S70
SURFACE: 16.500 m²



"Two functional spatial concepts, plinth and crown, are linked to form a new architecture, in a model that offers professionals the opportunity to treat and citizens the opportunity to be treated in an environment where natural light and silence are therapeutic."

Rafael de la Hoz