

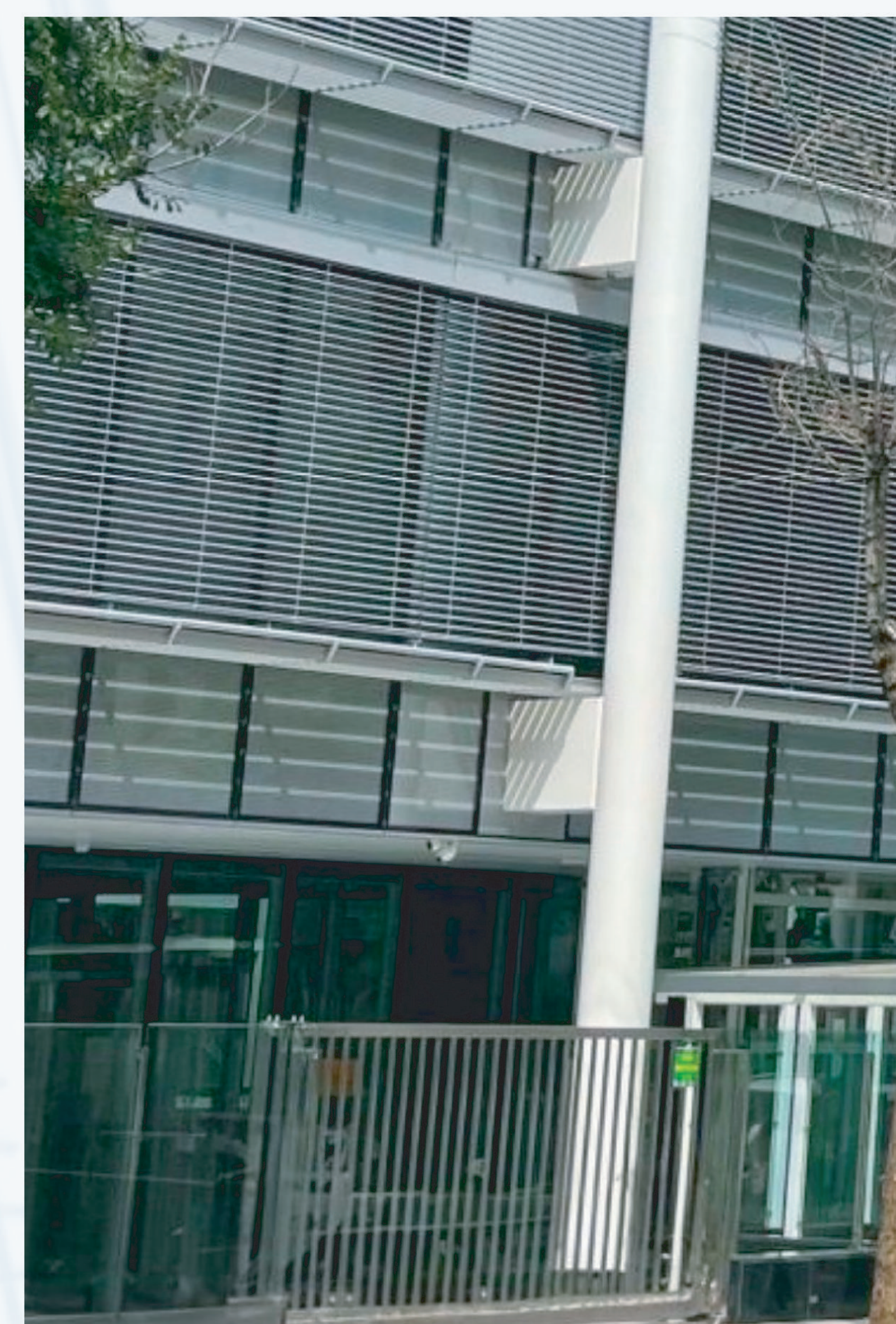
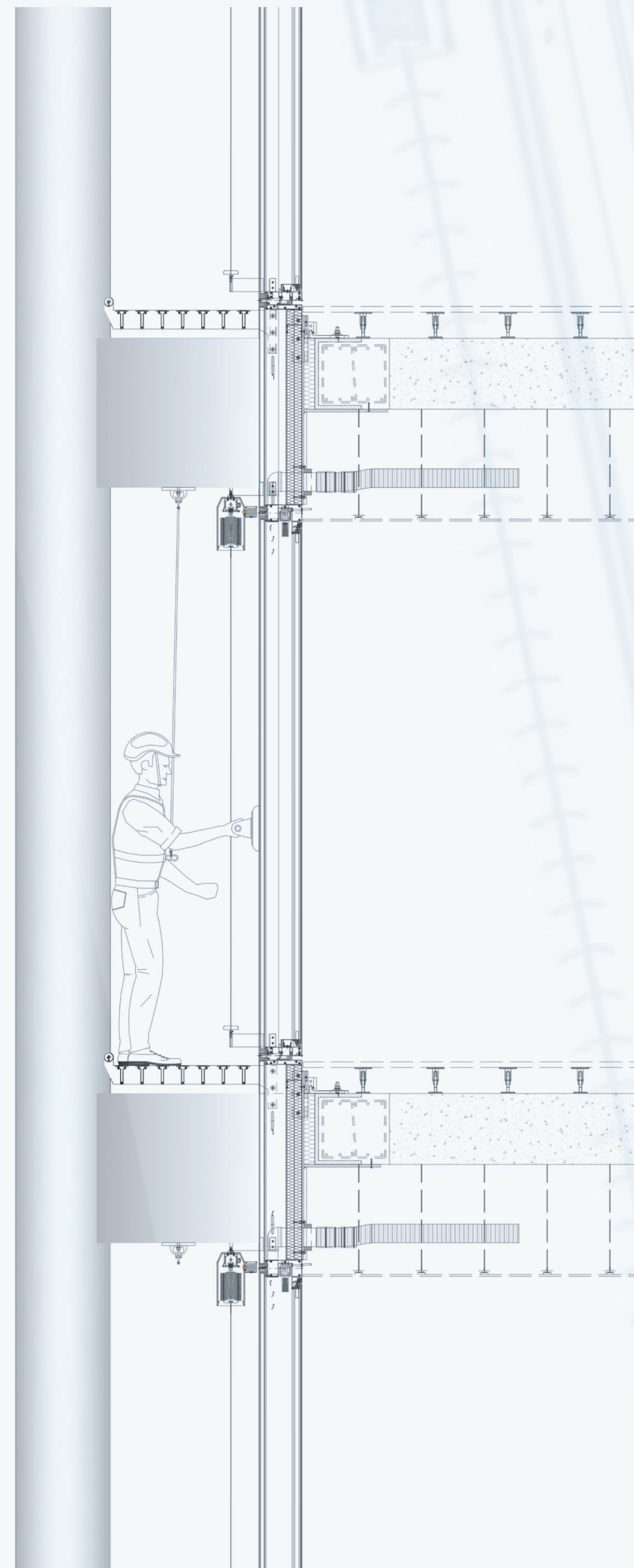
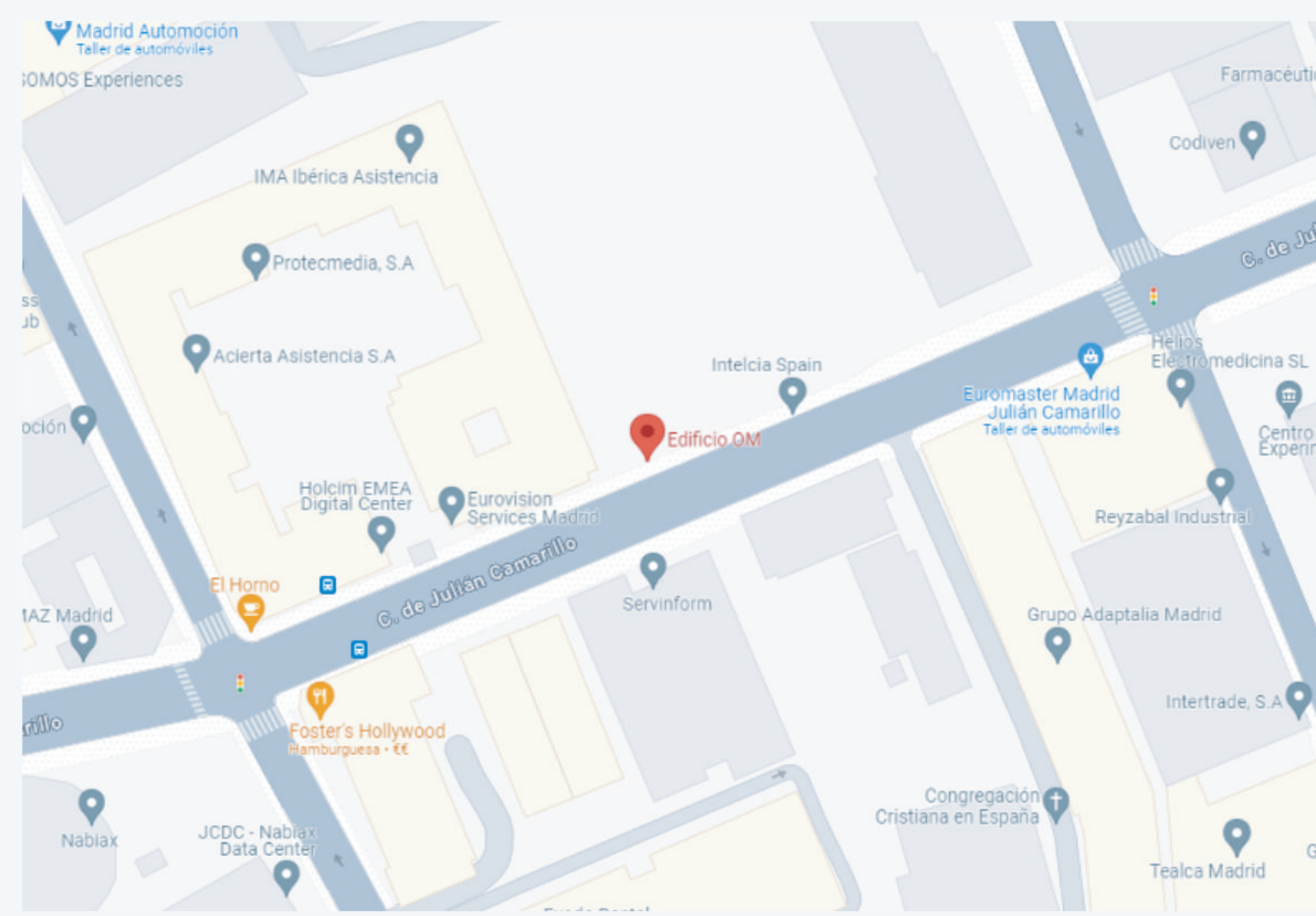
EDIFICIO OM[∞]

C/ Julián Camarillo, 29-31 Madrid, Spain



The Building covers a leasable area of 37.000 m² distributed over ground floor and 4 floors and below-grade parking lot with 1.240 parking spaces. This building is positioned as one of the largest sustainable business complexes in the country, achieving the prestigious LEED and WELL Platinum pre-certifications, and the AEO A+ certification. The main future of this project is its system facade, allowing an optimal use of natural light in a smart way with a reinforced exterior solar protection system, as well as several aluminium architectural walkways which facilitate the cleaning.

ARCHITECT: Ignacio Cristos Ayala - Arqués & Partner
CLIENT: Torre Rioja S.A.
TPOLOGY: SCW Active curtain wall system + skylight + catways
SURFACE: 31.300 m²



"Building where flexibility, efficiency and sustainability come together to improve life in the workplace".
Ignacio Cristos Ayala