

# SEDE ARNAIZ



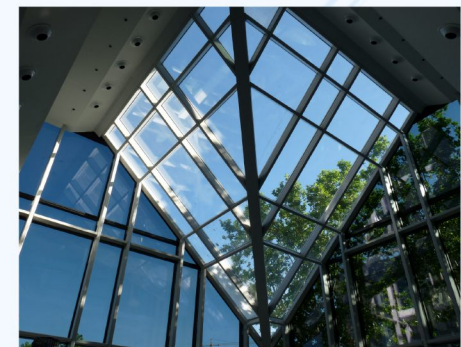
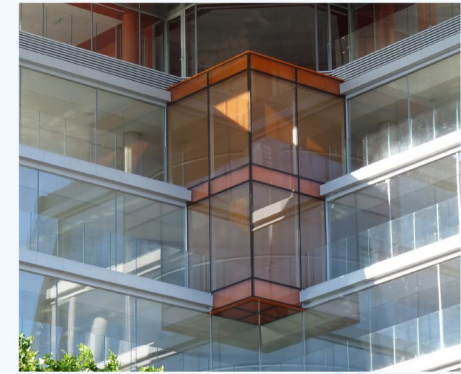
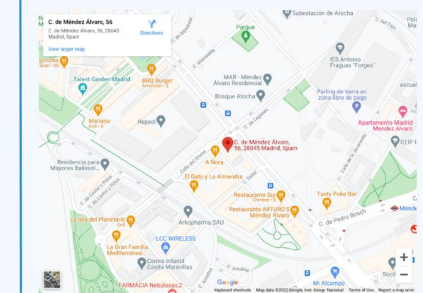
Madrid, Spain

The glazed structure of the building has the form of a broken cube that allows the "guts" of the organization to be seen from the outside. This is particularly noticeable at night, when the brightness and transparency of the entrance gives the impression that the lobby is completely open to the street, in the style of many avant-garde buildings in New York.

**ARCHITECT:** Arnaiz Arquitectos  
**CLIENT:** Arnaiz  
**TYOLOGY:** Passive CW S70  
**SURFACE:** 4.600 m<sup>2</sup>



*"This unique shape makes it possible for people to see life inside the building itself more closely. It also allows them to easily remember our headquarters and locate it more easily."*  
**Arnaiz Arquitectos**



Madrid, 2010